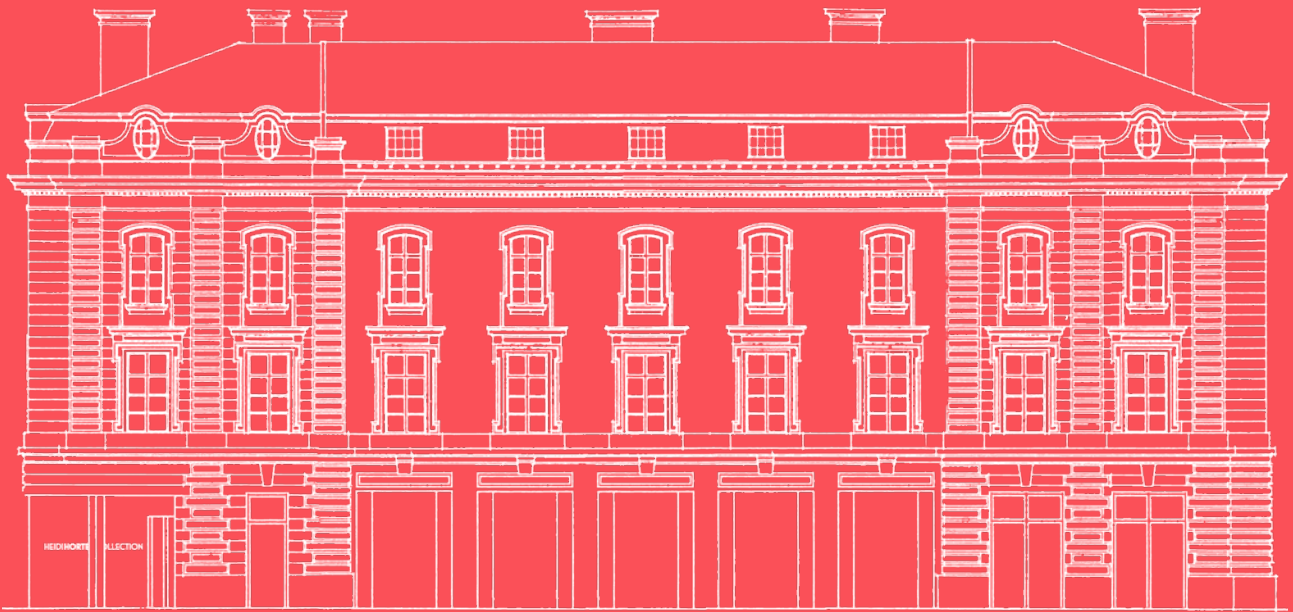
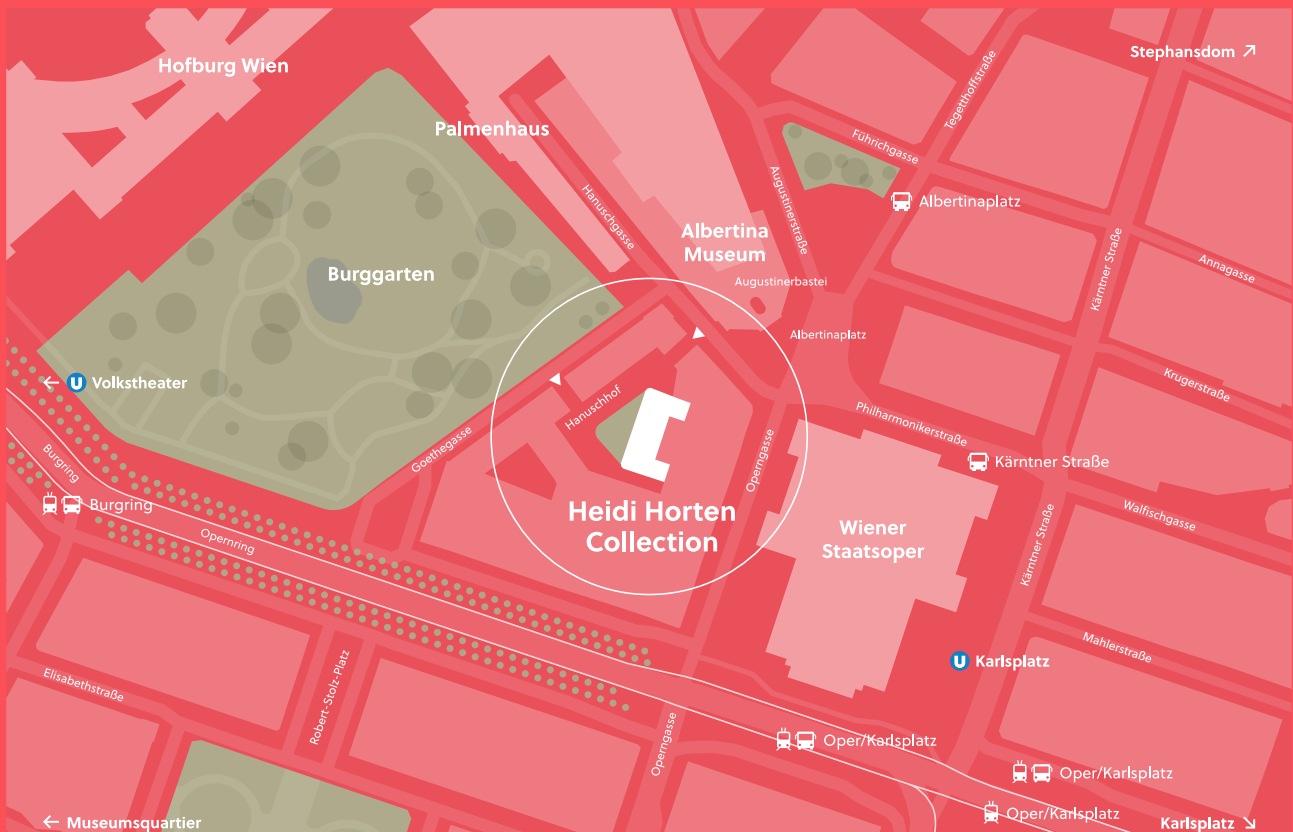


HEIDI HORTEN COLLECTION







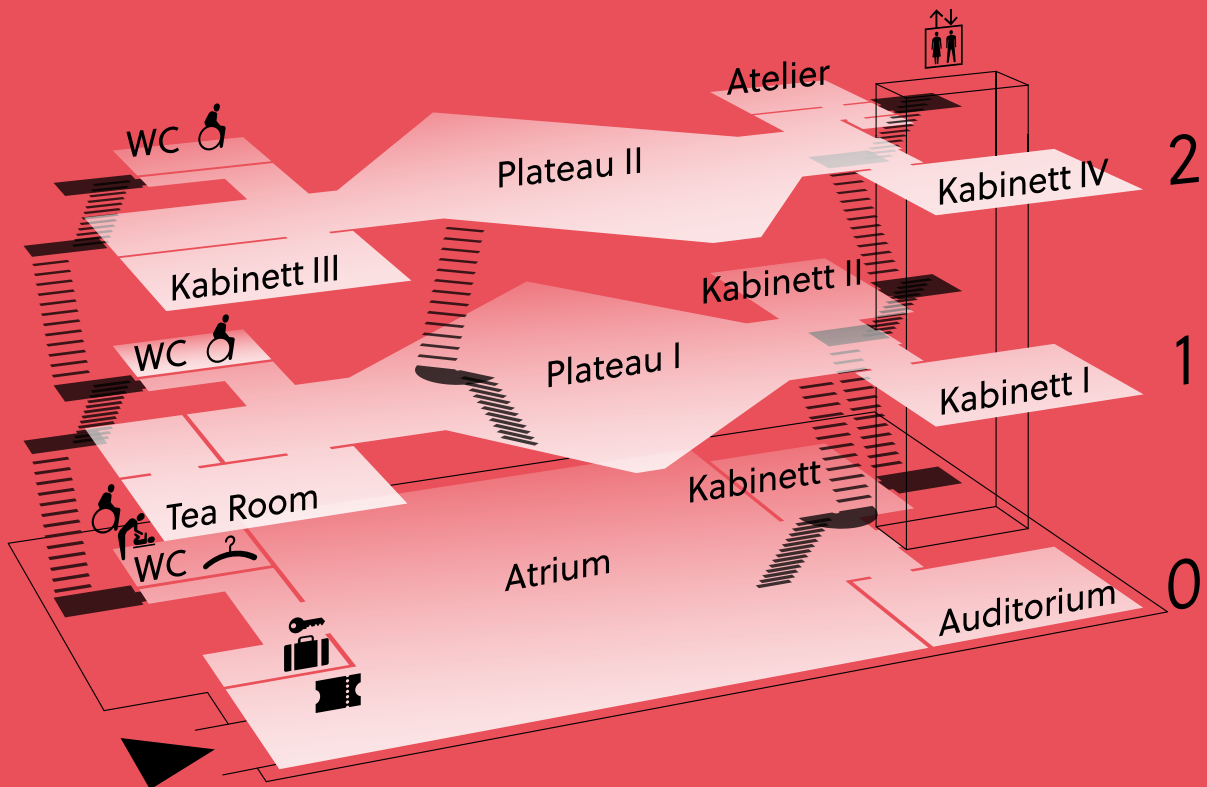
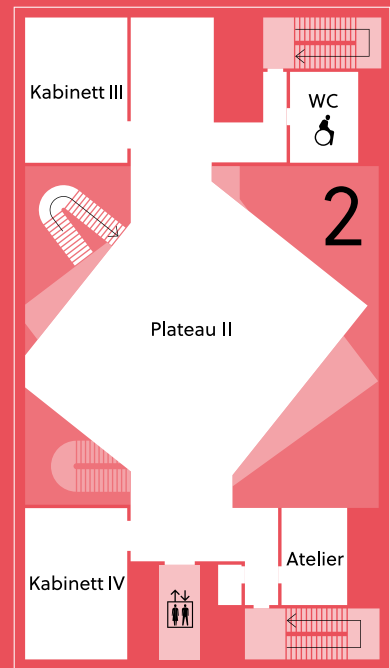
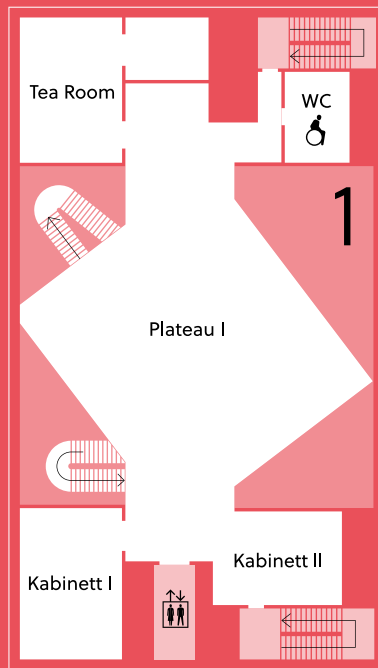
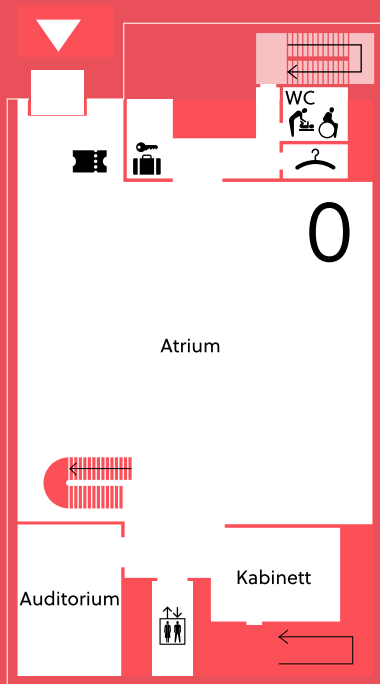
BREATHTAKING & WORLD CLASS

The museum hotspot in the heart of Vienna, right next to the State Opera, stands for the fulfillment of the visions of a passionate collector. Spectacular architecture meets high-class works by Klimt, Picasso and Warhol and thus offers the ideal setting for your successful event - whether elegant receptions, conferences or symposiums. As a supporting program we are happy to offer you exclusive guided tours through our current exhibition.



PRICES

	Area Size m ²	L/W/H m	PAX
 A lecture room with rows of dark green chairs facing a stage area. The room has large windows and modern decor. <p>Plateau 0 AUDITORIUM (Lecture Room)</p>	50	8,4 / 6,2 / 3,7	30
 A large, bright atrium with a polished floor, a staircase on the left, and large windows overlooking the outdoors. <p>Plateau 0 ATRIUM</p>	381	19,8 / 19,3 / 3,6	150
 A modern tea room with a large, decorative ceiling installation, a wall of circular lights, and a light-colored sofa. <p>Plateau 1 TEA ROOM</p>	48	7,8 / 6,2 / 3,3	20
 A large, multi-story building with a classic facade, illuminated at dusk, with a small courtyard in front. <p>Overall</p>	1.217		300



PRICES

Auditorium ((Lecture Room)	€ 2.500.-
Atrium (Plateau 0)	€ 7.000.-
Tea Room	€ 1.500.-
Overall	€ 10.000.-

Security, cleaning and electricity costs are included in the rental price. Technical support, additional technical equipment and furniture as well as catering are not included. The museum is open to the public every day except Tuesday from 11 AM to 7 PM and on Thursdays until 9 PM. The Tea Room and Auditorium can also be hired during museum opening hours, subject to availability. The Atrium is frequented by visitors during opening hours and can therefore only be hired for exclusive events outside opening hours. The regular rental price applies from 7 PM to max. 11 PM. On closing day (Tuesday) a surcharge of € 800 per hour will be charged. If you would like to visit the exhibition as part of your event, this is possible for € 12 per person.

PROGRAMME

On request, we organize guides to stand in the rooms as info points or guided tours with a maximum of 20 people each. The cost per guide per hour is € 150.-.

FACILITIES

MOBILIAR

30 chairs, 40 museum stools, 10 bar tables, 2 mobile bar elements.

CATERING

The Heidi Horten Collection works successfully with Preferred Partners. However, we leave it up to our customers to commission another catering company. In this case, a handling fee of 10% of the room rental will be charged.

TECHNICAL equipment can be provided if available: Sound system (indoor and outdoor), projector and screen (at the Auditorium), 2 hand-held microphones, 2 headsets.

Detailed information is available on request.

TECHNICS

Technicalequipment can be provided if available: Sound system (indoor and outdoor), projector and screen (at the Auditorium), 2 hand-held microphones, 2 headsets.

Detailed information is available on request.

CONTACT

events@hortencollection.com

Prices are net, since as a foundation we are not entitled to reclaim VAT. Rates are effective in 2024 and are subject to change without notice.